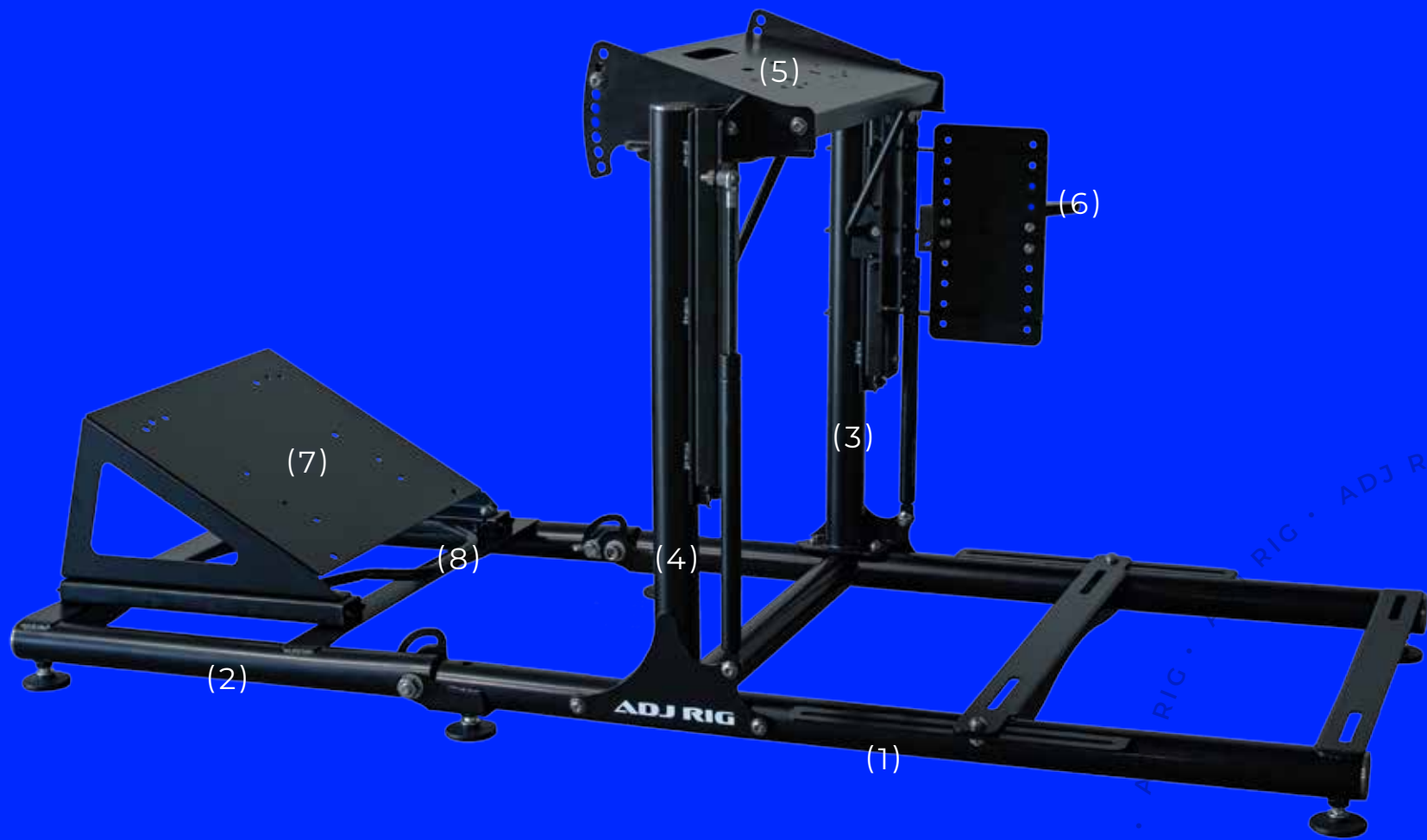
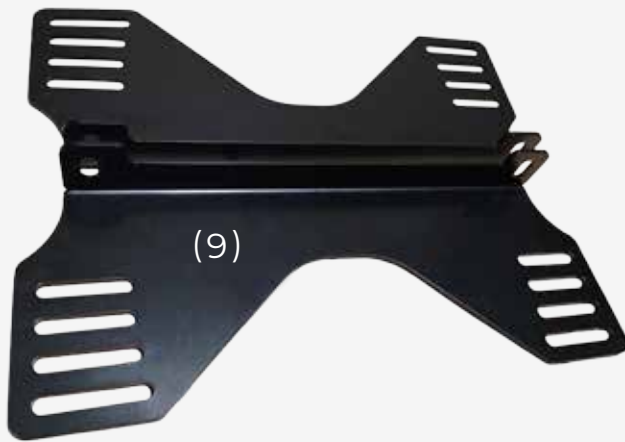


ADJUSTABLE ADJ SIM RIG

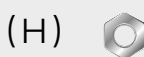
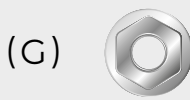
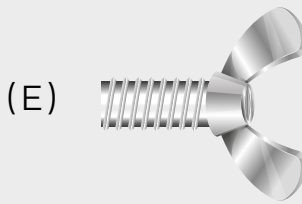
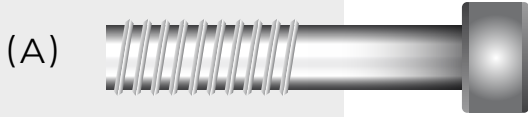


ADDITIONAL EQUIPMENT

BUCKET SEAT MOUNTING



ADJUSTABLE RAILS FOR BUCKET SEAT



ASSEMBLY INSTRUCTIONS

PARTS LIST FOR ASSEMBLING THE SIM RACING RIG:

- MAIN FRAME (1)
- TILT FRAME (2)
- RIGHT COLUMN (3)
- LEFT COLUMN (4)
- STEERING SHELF (5)
- SHIFTER SHELF (6)
- PEDALBOX BASE (7)
- ADJUSTMENT ARM (8)

- M12 BOLT (A) 2 PCS
- M8X16 BOLT (B) 12 PCS
- M8X20 BOLT (C) 8 PCS
- M5X12 BOLT (D) 4 PCS
- M10 WING BOLT (E) 2 PCS
- M12 NUT (F) 2 PCS
- M8 NUT (G) 12 PCS
- M5 NUT (H) 4 PCS
- M8 WASHER (I) 20 PCS
- M12 NYLON WASHER (J) 8 PCS
- M10 NYLON WASHER (K) 4 PCS
- M8 NYLON WASHER (L) 4 PCS

"PARTS LIST FOR BUCKET SEAT MOUNTING:"

- SEAT MOUNT (9)
- M8X16 BOLT (B) 4 PCS
- M8 NUT (G) 4 PCS

PARTS LIST FOR MOUNTING RAILS FOR BUCKET SEAT:*

- ADJUSTMENT ARM II (10)
- RIGHT ADJUSTABLE RAIL (11)
- LEFT ADJUSTABLE RAIL (12)
- M8 NUT (G) 4 PCS
- M8X16 BOLT (B) 4 PCS

*ADDITIONAL EQUIPMENT

PREPARE TOOLS

3 MM ALLEN WRENCH
8 MM OPEN-END WRENCH

5 MM ALLEN WRENCH
13 MM OPEN-END WRENCH

10 MM ALLEN WRENCH
19 MM OPEN-END WRENCH

SIM RACING SETUP

1. PLACE THE MAIN FRAME (1) ON A FLAT SURFACE AND LEVEL IT USING THE ADJUSTABLE FEET.



2. PLACE THE TILT FRAME (2) IN RELATION TO THE MAIN FRAME (1) AS SHOWN IN THE PICTURE.



3. ATTACH THE TILT FRAME (2) TO THE MAIN FRAME (1) USING M12 BOLTS (A) (2 PCS), M12 NUTS (F) (2 PCS), AND M12 NYLON WASHERS (J) (8 PCS), AS SHOWN IN THE PICTURE. PLACE THE M12 NYLON WASHERS (J) DIRECTLY UNDER THE HEADS OF THE M12 BOLTS (A) AND UNDER THE M12 NUTS (F), AS WELL AS BETWEEN THE TILT FRAME (2) AND THE MAIN FRAME (1) ON BOTH SIDES.



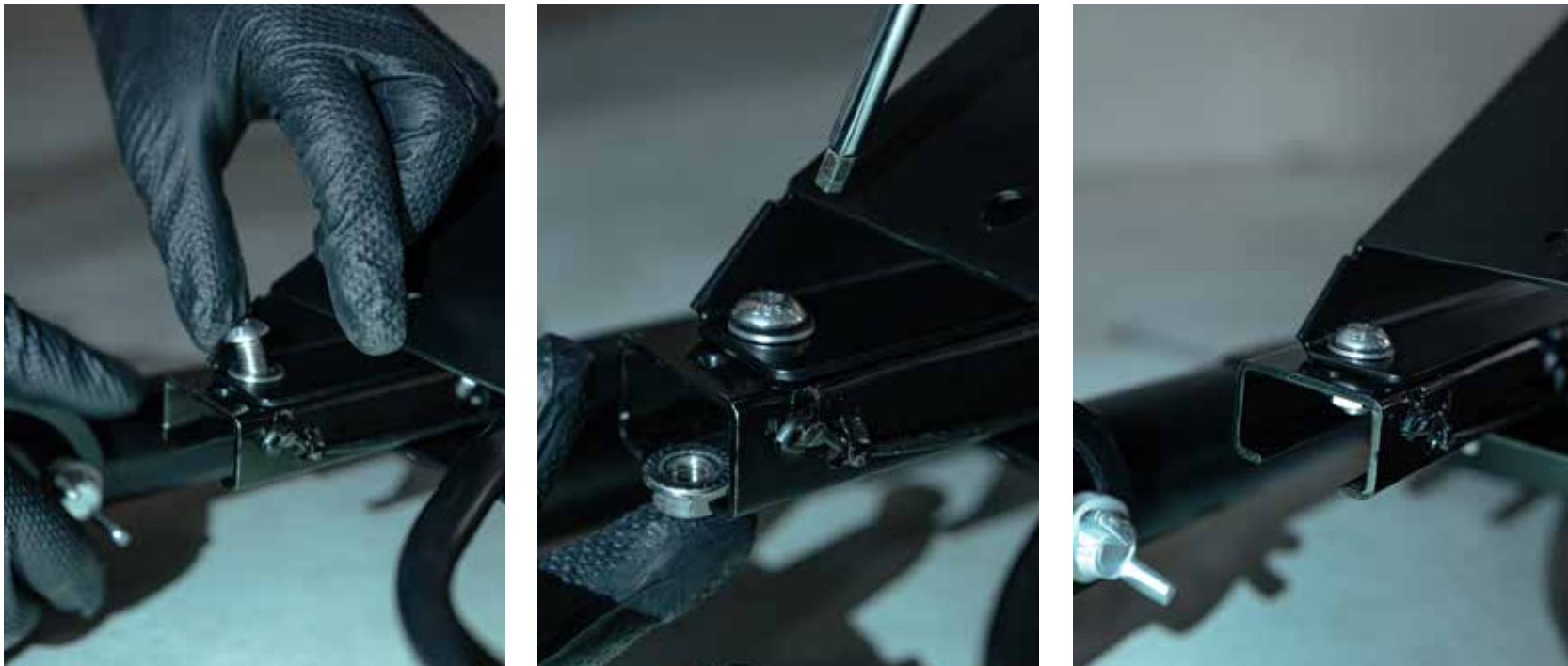
4. SCREW IN THE WING BOLTS (E) (2 PCS) ALONG WITH THE M8 NYLON WASHERS (L) (4 PCS), AS SHOWN IN THE PICTURES. INSERT THE WING BOLTS (E) INTO THE THREADED HOLES OF THE TILT FRAME (2). PLACE THE M8 NYLON WASHERS (L) DIRECTLY UNDER THE HEADS OF THE WING BOLTS (E) AND BETWEEN THE TILT FRAME (2) AND THE MAIN FRAME (1).



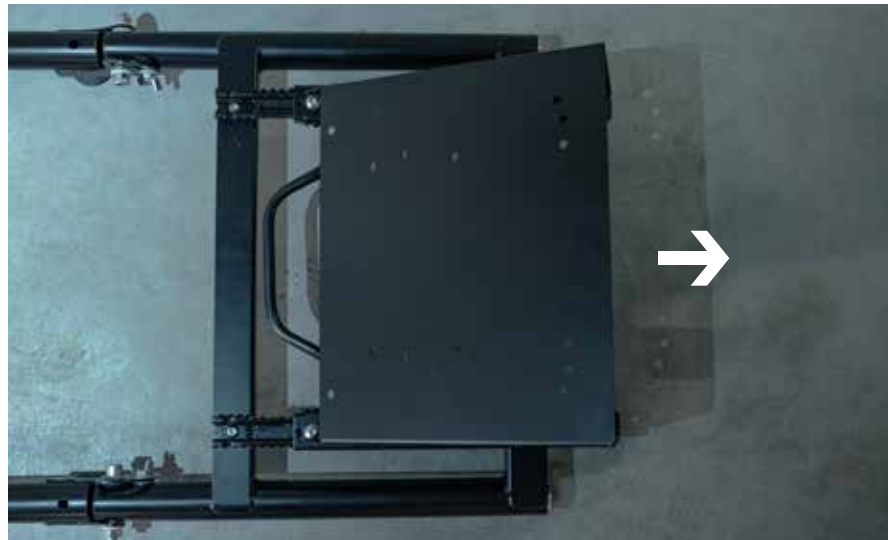
- 5.** TILT THE ADJUSTMENT ARM I (8) UPWARDS AND PULL IT TOWARDS THE MAIN FRAME (1) TO THE MAXIMUM POSITION, THEN PLACE THE PEDALBOX BASE (7) ON THE RAILS AS SHOWN IN THE PICTURES.



- 6.** ATTACH THE FRONT PART OF THE PEDALBOX BASE (7) TO THE TILT FRAME RAILS (2) IN TWO PLACES USING M8X16 BOLTS (B) (2 PCS), M8 NUTS (G) (2 PCS), AND M8 WASHERS (I) (2 PCS), AS SHOWN IN THE PICTURES. PLACE THE M8 WASHERS (I) DIRECTLY UNDER THE HEADS OF THE M8X16 BOLTS (B).



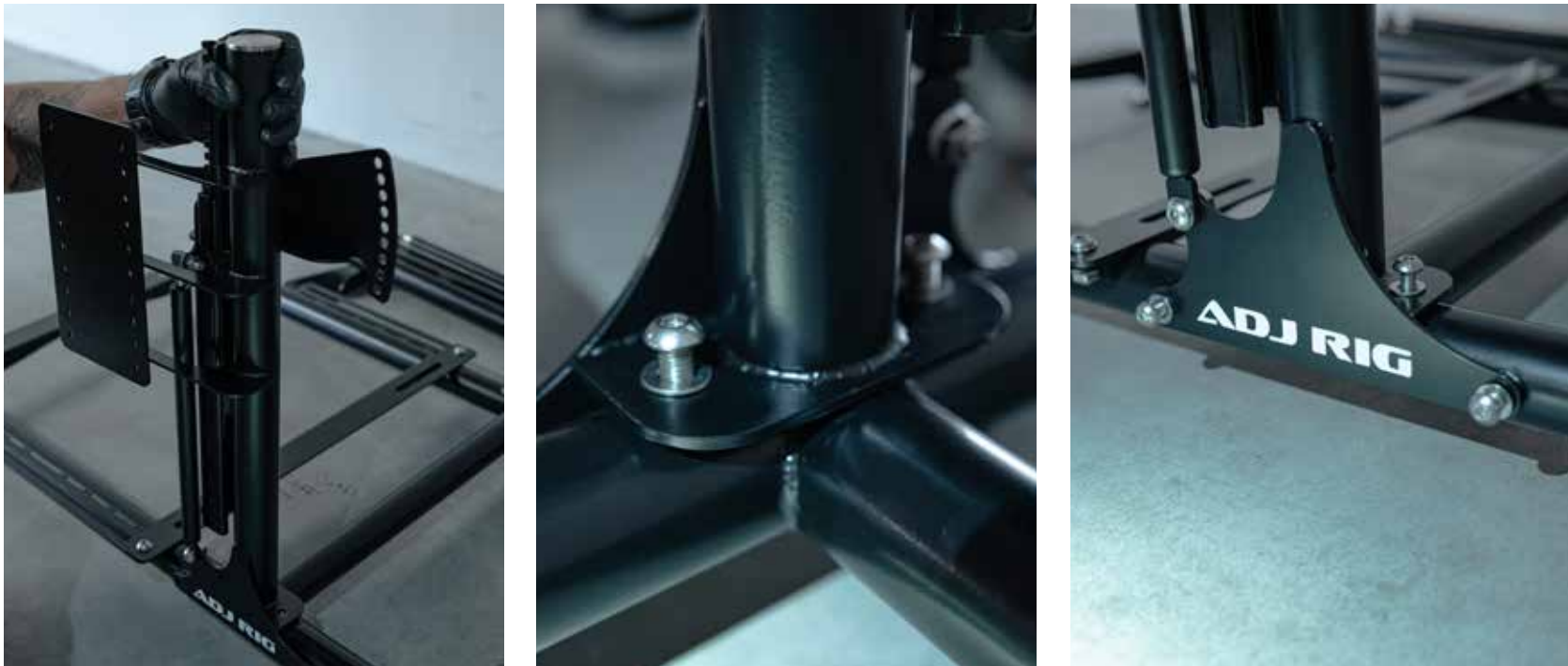
- 7.** SLIDE THE TILT FRAME RAILS (2) AS FAR AS POSSIBLE IN THE OPPOSITE DIRECTION OF THE MAIN FRAME (1), AS SHOWN IN THE PICTURE.



- 8.** ATTACH THE REAR PART OF THE PEDALBOX BASE (7) TO THE TILT FRAME RAILS (2) IN TWO PLACES USING M8X16 BOLTS (B) (2 PCS), M8 NUTS (G) (2 PCS), AND M8 WASHERS (I) (2 PCS), AS SHOWN IN THE PICTURE. PLACE THE M8 WASHERS (I) DIRECTLY UNDER THE HEADS OF THE M8X16 BOLTS (B).



- 9.** ATTACH THE RIGHT COLUMN (3) TO THE MAIN FRAME (1) AND SCREW IT IN FOUR PLACES USING M8X16 BOLTS (B) (4 PCS) AND M8 WASHERS (I) (4 PCS), LEAVING A SLIGHT GAP UNDER THE HEADS OF THE BOLTS (TIGHTENING IN STEP 12), AS SHOWN IN THE PICTURES. PLACE THE M8 WASHERS (I) DIRECTLY UNDER THE HEADS OF THE M8X16 BOLTS (B).



- 10.** SIMILARLY, ATTACH THE LEFT COLUMN (4) TO THE MAIN FRAME (1).



- 11.** PLACE THE ADJUSTMENT ARM I (8) IN THE PINS OF THE RIGHT COLUMN RAIL (3), THEN, WHILE COMPRESSING THE ARM, PLACE ITS OTHER SIDE IN THE PINS OF THE LEFT COLUMN RAIL (4), AS SHOWN IN THE PICTURES. NOTE: DO NOT ADJUST THE HEIGHT BEFORE MOUNTING THE STEERING SHELF (5).



- 12.** MOUNT THE STEERING SHELF (5) BETWEEN THE RIGHT COLUMN (3) AND THE LEFT COLUMN (4), AS SHOWN IN THE PICTURES. SECURE IT IN FOUR PLACES USING M8X20 BOLTS (C) (4 PCS), M8 NUTS (G) (4 PCS), M8 WASHERS (I) (4 PCS), AND M8 NYLON WASHERS (L) (4 PCS). PLACE THE M8 WASHERS (I) UNDER THE HEADS OF THE M8X20 BOLTS (C), AND PLACE THE M8 NYLON WASHERS (L) BETWEEN THE STEERING SHELF (5) AND THE RIGHT (3) AND LEFT (4) COLUMNS. THEN, TIGHTEN THE BOLTS OF THE RIGHT COLUMN (3) AND LEFT COLUMN (4), STARTING WITH THE VERTICALLY POSITIONED BOLTS.



- 13.** MOUNT THE SHIFTER SHELF (6) TO THE RIGHT COLUMN (3) AT THE PREFERRED HEIGHT USING M5 BOLTS (D) (4 PCS) AND M5 NUTS (H) (4 PCS) IN FOUR PLACES, AS SHOWN IN THE PICTURE.



CAR SEAT ASSEMBLY

- 1.** SLIDE THE MOVABLE RAIL OF THE MAIN FRAME TO THE APPROPRIATE WIDTH FOR SEAT INSTALLATION AND TIGHTEN IT.



- 2.** ATTACH THE SEAT USING M8X20 BOLTS (C) (4 PCS), M8 NUTS (G) (4 PCS), AND M8 WASHERS (I) (4 PCS) TO THE MAIN FRAME USING THE 4 LONGITUDINAL HOLES. PLACE THE M8 WASHERS (I) UNDER THE HEADS OF THE M8X20 BOLTS (C).



BUCKET SEAT ASSEMBLY

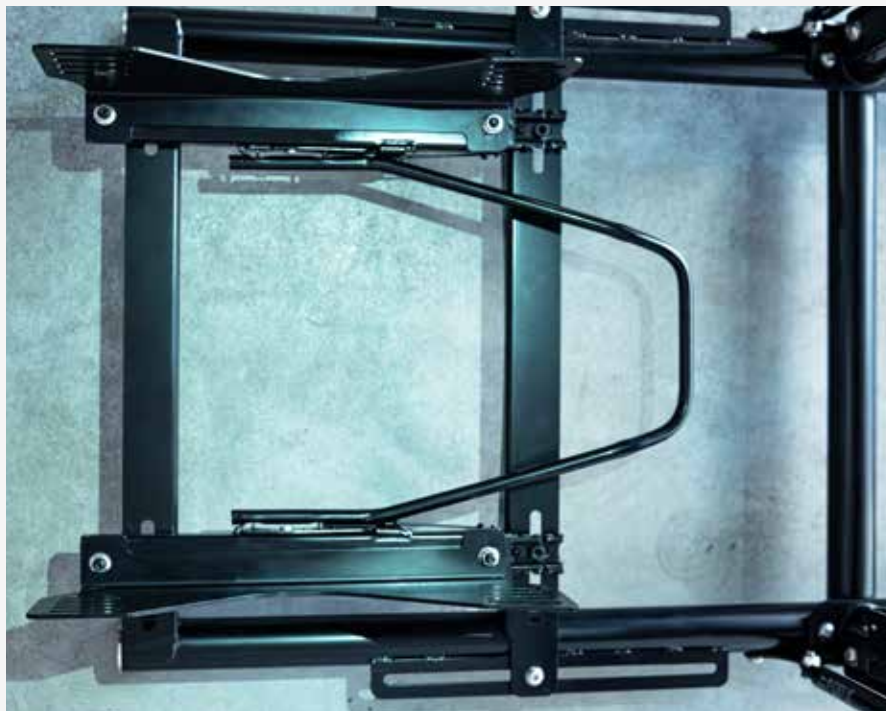
1. SLIDE THE MOVABLE RAIL OF THE MAIN FRAME ACCORDING TO THE HOLE SPACING OF THE RIGHT ADJUSTABLE RAIL (11) AND LEFT ADJUSTABLE RAIL (12), AND TIGHTEN IT.



2. ATTACH THE SEAT MOUNTS (9) (2 PCS) TO THE ADJUSTABLE RAILS (11) (12) USING M8X16 BOLTS (B) (4 PCS) AND M8 NUTS (G) (4 PCS). MOUNT THE ADJUSTABLE RAILS (11) (12) WITH THE SEAT MOUNTS (9) AT THE APPROPRIATE WIDTH FOR THE BUCKET SEAT USING THE LONGITUDINAL HOLES OF THE MAIN FRAME, WITH M8X16 BOLTS (B) (4 PCS) AND M8 NUTS (G) (4 PCS), AS SHOWN IN THE PICTURES.



3. PLACE THE ADJUSTMENT ARM II (10) IN THE PINS OF THE RIGHT ADJUSTABLE RAIL (11), THEN, WHILE COMPRESSING THE ARM, PLACE ITS OTHER SIDE IN THE PINS OF THE LEFT ADJUSTABLE RAIL (12), AS SHOWN IN THE PICTURES. NOTE! DUE TO THE VARYING MOUNTING WIDTHS OF BUCKET SEATS, THE ADJUSTMENT ARM II (10) SHOULD BE ADJUSTED BY CAREFULLY BENDING OR WIDENING IT SO THAT IT FITS TIGHTLY ONTO THE PINS.



4. ATTACH THE BUCKET SEAT USING M8X20 BOLTS (C) (4 PCS) AND M8 WASHERS (I) (4 PCS) TO THE SEAT MOUNTS (9) USING THEIR LONGITUDINAL HOLES. PLACE THE M8 WASHERS (I) UNDER THE HEADS OF THE M8X20 BOLTS (C).



USAGE OF THE FRAME

SAFETY GUIDELINES

1. USING THE APPROPRIATE TOOLS

ALWAYS USE THE TOOLS LISTED IN THE MANUAL (HEX AND FLAT WRENCHES OF VARIOUS SIZES) FOR ASSEMBLING AND DISASSEMBLING THE FRAME. MAKE SURE THAT ALL SCREWS, NUTS, AND WASHERS ARE PROPERLY TIGHTENED TO PREVENT THE STRUCTURE FROM LOOSENING, WHICH COULD WEAKEN ITS STABILITY.

2. AVOIDING SHARP EDGES

BEFORE STARTING THE ASSEMBLY, CHECK THAT NONE OF THE COMPONENTS HAVE SHARP EDGES. FOR SAFETY, IT IS RECOMMENDED TO WEAR PROTECTIVE GLOVES TO AVOID CUTS DURING ASSEMBLY AND HANDLING OF THE FRAME COMPONENTS.

3. STRUCTURAL STABILITY

MAKE SURE THE FRAME IS PLACED ON A LEVEL SURFACE AND PROPERLY LEVELED USING ADJUSTABLE FEET. ANY ADJUSTABLE COMPONENTS, SUCH AS RAILS OR ADJUSTMENT ARMS, MUST BE SECURELY LOCKED TO PREVENT SHIFTING DURING THE USE OF THE SIMULATOR.

4. CAUTION DURING ADJUSTMENT

WHEN ASSEMBLING THE COMPONENTS OF THE SETUP, MAKE SURE TO TIGHTEN ALL SCREWS. THIS ENSURES AN EVEN DISTRIBUTION OF LOADS, PREVENTING EXCESSIVE PRESSURE ON ONE SIDE OF THE FRAME AND EXTENDING ITS LIFESPAN.

5. STEERING SHELF ADJUSTMENT

AFTER SETTING THE STEERING SHELF IN THE DESIRED POSITION, CHECK IF IT IS LEVEL. IF THE SHELF IS NOT PERFECTLY HORIZONTAL, FIRST PRESS DOWN ON THE SIDE THAT IS HIGHER, THEN ENGAGE THE ADJUSTMENT ARM TO LEVEL IT. ONCE THIS IS DONE, MAKE SURE THE LOCKING MECHANISM HAS PROPERLY ENGAGED TO ENSURE THE STABILITY OF THE STEERING DURING USE.

6. SEAT ASSEMBLY

WHEN ASSEMBLING THE SEAT, PAY SPECIAL ATTENTION TO PROPERLY FITTING AND TIGHTENING ALL FASTENINGS. MOVING PARTS OF THE SEAT, SUCH AS ADJUSTABLE RAILS, SHOULD BE SECURELY MOUNTED TO PREVENT THE SEAT FROM SHIFTING DURING SIMULATION.

7. AVOIDING EXCESSIVE LOAD

THE FRAME IS DESIGNED TO SUPPORT SPECIFIC COMPONENTS SUCH AS THE STEERING WHEEL, PEDALS, AND SEAT. THE MAXIMUM PERMISSIBLE LOAD IS 150 KG. EXCEEDING THIS LIMIT MAY CAUSE DAMAGE TO THE STRUCTURE OR FAILURE.

8. REGULAR MAINTENANCE

REGULARLY CHECK THE FRAME FOR LOOSE SCREWS, WORN COMPONENTS, AND ANY SIGNS OF DAMAGE. IF NECESSARY, PROMPTLY REPAIR OR REPLACE DAMAGED PARTS TO ENSURE SAFE USE.

9. PROTECTION OF THE PAINT COATING

DURING ASSEMBLY AND USE OF THE FRAME, AVOID CONTACT BETWEEN SHARP TOOLS OR OBJECTS AND ITS SURFACE. SCRATCHES OR DAMAGE TO THE PAINT COATING CAN LEAD TO CORROSION OF METAL PARTS, WHICH MAY REDUCE THE DURABILITY AND AESTHETICS OF THE STRUCTURE. IF NECESSARY, USE PROTECTIVE COVERS OR SOFT TOOL PADS TO SAFEGUARD THE SURFACE.

10. SAFE STORAGE

AFTER USE, STORE THE FRAME IN A DRY PLACE, AWAY FROM MOISTURE, TO PREVENT CORROSION OF THE METAL COMPONENTS. ALSO, AVOID APPLYING EXCESSIVE PRESSURE ON ELEMENTS SUCH AS THE STEERING SHELF, SHIFTER SHELF, PEDALBOX BASE, AND ADJUSTMENT ARMS TO PREVENT DEFORMATION.

11. USER SAFETY

THE FRAME IS DESIGNED SOLELY FOR THE ASSEMBLY AND USE OF SIMULATION COMPONENTS (STEERING WHEEL, PEDALS, SEAT). DO NOT USE THE FRAME FOR OTHER PURPOSES, SUCH AS SITTING ON IT OR LOADING IT WITH HEAVY OBJECTS.

12. CHILD SAFETY WARNINGS

THE FRAME IS NOT INTENDED FOR USE BY CHILDREN WITHOUT THE SUPERVISION OF AN ADULT. SMALL PARTS MAY POSE A CHOKING HAZARD, AND IMPROPER USE COULD LEAD TO INJURY.